

HIGH LAKES EQUIPMENT SALES AND APPRAISALS CALL 541-410-9366



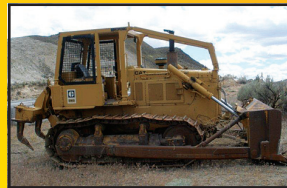
1995 CAT 322L EXCAVATOR, New short block, Hydraulic Thumb, Aux. Hydraulics, Wedge Type Quick Coupler, 42" Bucket, 28" Pads, 70% or better UC\$46,000.



2005 BOBCAT T190, Ready to go to work, w/74" GP Bucket with a manual Quick Coupler, Aux Hyd., Keyless Entry, Undercarriage is 40-50% remaining..... \$19,500.



2008 FORD F-550 XL SD, diesel auto. trans., only 40,000 miles, 11' Crane service body & 6,000-pound crane, FOB Oregon \$56,500.



1984 CAT D6D with ripper, One owner, with Single Tilt U Dozer, Screens and Limb Risers, 3 Shank Ripper, 50% or better U/C with 20" Pads and Rock Guards, Over all really nice machine..... \$42,500.



2005 TIMBERPRO TF830, Job Ready, 8x8 Forwarder, Supergrip Grapple, 8.3 Cummins, 710/50x26.5 Tires \$235,000.



1999 CAT 320 BL Delimbers, Forestry Machine, Denharco DT3500 Winch Drive, Top Saw, Butt Saw and Butt Plate, Double Bar Grousers, U/C 70% or better with Rock Guards.....\$36,500.



2007 VALMET EX10, Job ready, 370.2 Valmet Head\$239,500.



1990 KOLBERG 1724-36 Pug Mill, 124-B feeder, 1224-36 con, scales system, wed 125 hp., speed air comp., 480v panel, Allen-Bradley soft start, FOB Oregon \$79,500.

OTHER EQUIPMENT AVAILABLE • HIGHLAKESEQUIPMENT@BENDBROADBAND.COM