



DUKES EQUIPMENT & PARTS

2015 S. 18th St., Union Gap, WA

509-469-9420 • 509-952-9223 • DUKESCABIN@HOTMAIL.COM



2011 LINK-BELT 240X2 DENHARCO DM4550 10K HRS, ONE OWNER \$155,000.



2006 CAT 140H VHP 8,700 HRS. SNOW WING, MICHELIN TIRES\$98,000.



KOBELCO SK300 MARK IV PARTING OUT



TEREX TA30 PARTING OUT GOOD ENGINE AND TRANS.



CAT D9L PARTING OUT



D9N PARTING OUT



D8K WITH 4BBL RIPPER PARTING OUT



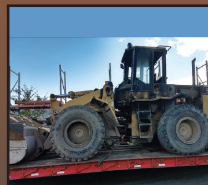
2002 660D TIMBERJACK, 13K HRS. AC/HEAT, DUAL FUNCTION ARCH GOOD 30.5X32 TIRES...\$39,000. ALSO: TIMBERJACK 2000 660 DUAL FUNCTION ARCH AC/HEAT...\$29,000.



FMC 210 PARTING OUT



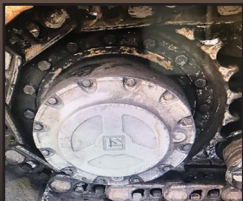
DEERE 2054 with DM4400 Limber PARTING OUT



PARTING OUT 930G, 924G, 938F, 928G, Case 921 PARTING OUT



JEWELL GRAPPLES 60" AND 65"



FINAL DRIVES, LOMAN, GFT 80,110, CAT. AND DEERE



CAT ENGINES: 3304PC, 3306D1, 3056, D342, C4.2, 3208, 3408, 3116 mechanical



REBUILT CAT TRANSMISSIONS: 930G, 938F, 924G, 525, D9L, 988B



CAT ENGINE D10R, 3412E