

# MPE

INCORPORATED

Call Chuck 24/7  
530-221-6760

8537 Commercial Way  
Redding, CA 96002

See all of our equipment and attachments at:  
www.mpequipment.com

## CAT 527 Certified Rebuild Power Train Plus



### CAT 527 TRACK SKIDDER SWING GRAPPLE CAB w/AIR

REBUILD PERFORMED BY  
LOCAL CAT DEALER

The CAT Certified Rebuild Power Train Plus Includes:

- New, Out-of-Crate CAT Engine
  - Recondition Radiator, Including All Hoses, Clamps, Seals
  - Rebuild Transmission to New CAT Specs
  - Rebuild Torque Converter to New CAT Specs
  - Rebuild/Recondition Steering Clutches, Brake Modules and Final Drives
  - Recondition Equalizer Bar and Pin Bores; Install New Pins, Bearings, Seals
  - Replace Pivot/Stub Shafts with New CAT Shafts
  - Recondition Track Roller Frames
  - Repair Track Guiding Guards at Swing Frames
  - Replace Undercarriage with All New CAT Components, Including Track Groups, Rollers, Idlers
  - New Rock Guards
  - Reseal/Replace Power Train Hoses
  - Replace U-Joints and Hardware
  - Install New ACPump, Alternator, Wire Harness
  - Recondition Front C Frame
  - Complete All CAT Engineering Updates as Needed
- Additional Work Performed:
- New Paint
  - New Front and Rear Windows
  - New Prolenc Snubber and Pins
  - Repair Boom and Grapple as Needed

CALL CHUCK  
530-221-6760

**\$330,000**



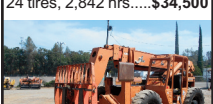
2011 JD 772G, AWD, Tier III, 14' MB, PB, rear ripper w/2 shanks, LoPro cab, AC, 17.5x25 Bridgestone radials, 5,285 hours.....\$199,500



2004 CARELIFT ZB8044-44 44' zoom boom, 4x4x4, cab (no door), Cummins, 14:00x24 tires, 2,842 hrs.....\$34,500



2009 CAT 140M AWD, VHP+, Tier III, 6x6, 14' MB (2' extension available), PB, rear ripper, joy stick controls, beacon, 14:00x24 tires, former county, good condition, 6,300 hours.....\$172,500



1997 LULL 10K54, 10,000 lbs., 54' reach, tilt carriage, out riggers, 60' forks, Cummins, auto trans, stamped weight: 29,910 lbs.....\$25,000



1993 CAT D5H TSK II, swing grapple, 6-way blade, ROPS, 14,000 +/- hours.....\$72,500



2004 MORGAN SX706SB, 6 WD, 3,103 original hours, very good tires, swing boom, 120" grapple open, full rotation, 8.3 Cummins @ 260 hp, hydrostatic drive, ROPS, cab, AC, approx 39,000 lbs, job ready.....\$112,500



LeTOURNEAU LOG STACKER, 60-ton, cab, 4x4, 12.7 liter Detroit Series 60, excellent tires, very clean, good history, from major pipeline job, 3 available.....CALL



2012 KOBELCO SK260-9, 48" bucket, standard stick, aux hyd, IT Tier 4 @ 176hp, 2,201 hours.....\$140,000



2010 VOLVO EC210CL, QC bkt 9'6" stick, aux hyd, AC, rear view camera, 3,950 hours.....CALL



2006 DOOSAN DX300LC, Tier III, 48" bucket w/ HPF link thumb, aux hyd, 4,400 hours, clean.....\$92,500



2012 KOMATSU PC360LC-10, Tier 4, 30" dig bkt, 10'6" stick, 33 1/2" pads, lube system, cab guard, rear camera, AC, 2,182 hours.....\$225,000



2004 HITACHI ZX350LL FORESTER w/2008 Waratah 624C Processor w/4,700 hrs., heel rack, low hours on 624C, good UC, runs & works well, 13,337 hrs.....\$199,500



PROLENC SNUBBERS for skidders, in stock.....CALL



NEW! NEW JD F524 SAWHEAD, 24" cut, 30 degree rotation, approx 8,380 lbs., fits JD 959J and others, brand new!.....\$50,000



KOEHRING 6625, 3-axle Pierce carrier, 6V92 lower, 8.2 upper, auto w/44,000 lb. SSHD rears, loaded logs through November 2013, good for age.....\$15,000

BALDERSON LOG FORKS, for 966D/E, double top clamp, missing one cylinder, fair/good cond.....\$2,500

MEDFORD LOG FORKS, for 966D/E, double top clamp, fair/good condition.....\$4,000



2007 NEW HOLLAND TV145 w/Brown Bear PA35D Aerator/Composter, bidirectional, front-mount water tank \$92,500



1982 CAT 3512 GENSET, 1,250 kw, 1,818 hp, 480 volt, 60 hertz, 3 phase, 1,500 gal fuel capacity (2 tanks), insulated muffler, 10,140 hours, mounted in 1992 Fruehauf 48' dry van.....\$75,000

CONSIGNED BY OWNER  
Located in Philo, California



WASHINGTON 188 YARDER, Detroit 8V92T power, 4-axle carrier, standing skyline, Eaglelet motorized carriage, good, clean unit, work ready.....\$200,000



2006 JD 759G FELLER BUNCHER, saw head, good undercarriage, JD engine, tilt cab, working daily, 12,000+ hours.....\$100,000



2000 CAT 416C BACKHOE, 4X4, 4n1 ext hoe, OROPS, very clean, 2,800 original hours.....\$32,500



1990 GROVE RT760, 60-ton capacity, 35'-110' 4-section boom, 32' to 56' swing-away jib, anti two block, PAT DS3506 LM, aux winch, hyd outriggers, 29.5x25 tires, 8 cyl diesel, auto 6 spd trans, 4x4x4, good unit, 3,030 hours.....\$92,500



2002 GENIE S125, 125' w/jib, 4x4, power to platform, 8' basket, Cummins, very good tires, 5,800 hours.....\$49,500