



509-330-3330

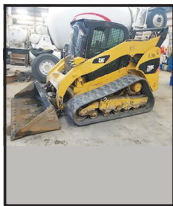
call or text
Pullman, WA

See all our equipment for sale at:
www.motleymotley.com/equipment-sale
colt@motleymotley.com

••• **Fall Specials** •••



1990 Ford Mechanic/Service Truck, Straight, strong running, everything works, air compressor, 1/2" and 1" hose, nice boxes, get this one while it lasts! \$12,700.



2011 Cat 299C Skid Steer, 2 spd, High flow, low hrs! Great condition! Lots of new parts including susp stub axles, U/C bushings, and bottom bucket pins and bushings. This machine is tough and job site ready! \$42,790.



Huber M750 Motor Grader, Beautiful, well maintained machine. Newer paint, good tires, excellent running\$18,975.



2000 Caterpillar 627F Scraper, Not many of these for sale, especially in this kind of shape! Regularly serviced, strong running! \$220,000.



2001 Caterpillar 627G Scraper, Newer paint! Very Clean Machine! Almost new Rear Tires! \$224,900.